



Industrial 8/4-Port Unmanaged Fast Ethernet Switch

■ ■ EH2308-PR / EH2304-PR

RoHS compliant

Technology

- 10/100BaseT(X) (RJ45)
- Broadcast storm protection
- Support IEEE 802.3/ 802.3u/ 802.3x
- 10/100M, Full/Half-Duplex, MDI/MDI-X auto-detection

Reliability

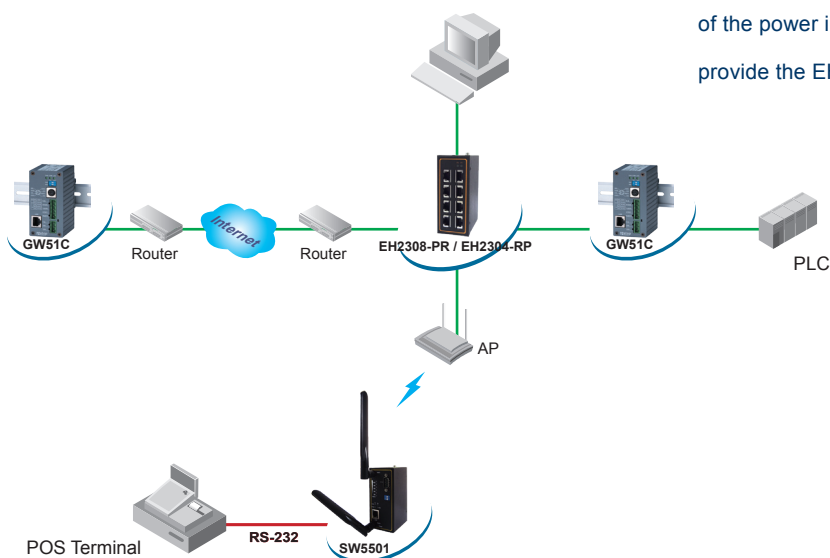
- Redundant dual DC power inputs
- Operating temperature ranges from -10°C ~ 70°C
- Rugged high-strength housing
- DIN-Rail or wall mounting ability
- Slim-size housing (EH2304-PR)

EH2308-PR/EH2304-PR are with 8/4 RJ-45 ports for your industrial applications. They are designed to work in the industrial environment, such as in hazardous locations and compliant with CE, FCC, UL, and RoHSII standards.

EH2308-PR /EH2304-PR protect themselves from receiving over broadcast packets.

During normal use, broadcast packets will be forwarded to all ports, except the source port. However, it will discard broadcast or multicast packets if the number of those packets exceeds a threshold in a preset period of time. When the preset period expires (about 800ms), it will then resume receiving broadcast or multicast packets until the threshold is reached again.

EH2308-PR/EH2304-PR provide two redundant power inputs that can be connected simultaneously to wide-range DC power sources. If one of the power inputs failure, the another live source acts as a backup to provide the EH2308-PR/EH2304-PR power input automatically.



Industrial 8/4-Port Unmanaged Fast Ethernet Switch

 **EH2308-PR / EH2304-PR**

Specifications

Technology

Standards	IEEE802.3, 802.3u, 802.3x
Processing Type	Store and Forward
Flow Control	IEEE802.3x flow control, backpressure flow control

Interface

RJ-45 Ports	10/100BaseT(X) auto negotiation speed Full/Half-duplex mode, and auto MDI/MDI-X connection
LED Indicators	Power, 10/100M

Power

Input	9 ~ 48 VDC, Dual inputs
Consumption	EH2308-PR 6.4 Watts Max. / EH2304-PR 4.0 Watts Max.
Connector	Removable 5-pin Terminal Block for power input
Reverse Polarity Protection	Present

Environment

Operating	-10°C ~ 70°C (14°F ~ 158°F)
Storage	-40°C ~ 85°C (-40°F ~ 185°F)
Ambient Relative Humidity	5%~95% non-condensing

Physical

Housing	IP30 protection, metal housing
Dimension(W x H x D)	EH2308-PR 45.3mm x 110mm x 89.6mm EH2304-PR 22.5mm x 110mm x 78mm
Weight	EH2308-PR 460g / EH2304-PR 320g

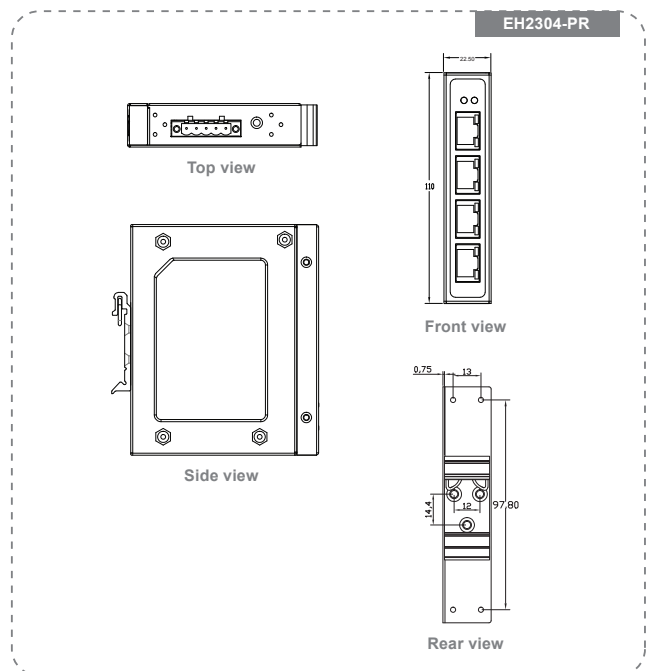
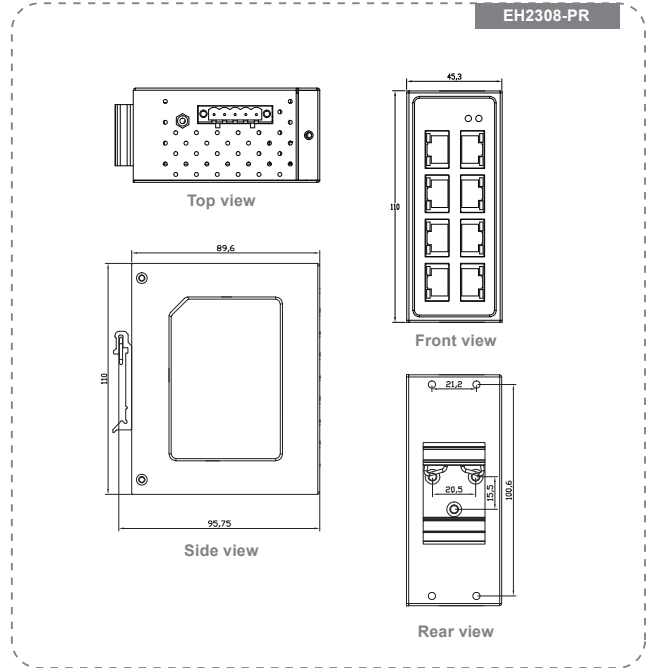
Approval

UL(Safety)	UL60950-1 2nd Ed. /CSA C22.2 No.60950-1-07 2nd Ed.
FCC(EMI)	FCC 47 CFR Part15, Subpart B, Class A
CE(EMI)	European Standard EN 55022:2010
CE(EMS)	EN 55024: 2010 IEC 61000-4-2: 2008 IEC 61000-4-3: 2010 IEC 61000-4-4: 2012 IEC 61000-4-5: 2005 IEC 61000-4-6: 2008 IEC 61000-4-8: 2009 IEC 61000-4-11: 2004
Shock	IEC 60068-2-27
Drop	ISTA Test Procedure 2A
Vibration	IEC 60068-2-64
RoHS	Lead(Pb) Free
MTBF	EH2304-PR 673300 hrs/ 76.86 years EH2308-PR 515600 hrs/ 58.86 years

Warranty	5 years
-----------------	---------

Optional Accessories

Power adapter	UN315-1212 (US-Y): Y-Type power adapter, 100~240VAC input, 1.25A @ 12VDC output, US plug, LV6 UNE315-1212 (EU-Y): Y-Type power adapter, 100~240VAC input, 1.25A @ 12VDC output, EU plug, LV6
----------------------	---



Atop Technologies, Inc.

TEL : +886-3-5508137
FAX : +886-3-5508131
sales@atop.com.tw
http://www.atop.com.tw

Design and specification are subjected to change without notice.
All product names referenced herein are registered trademarks of their respective companies.

